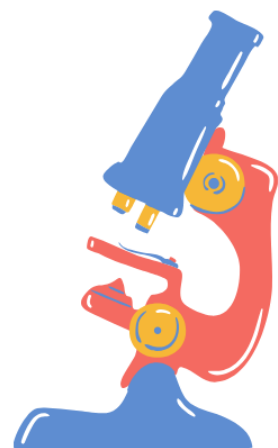
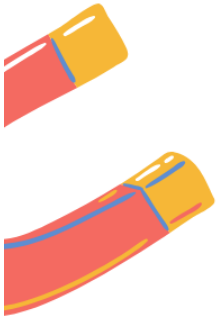
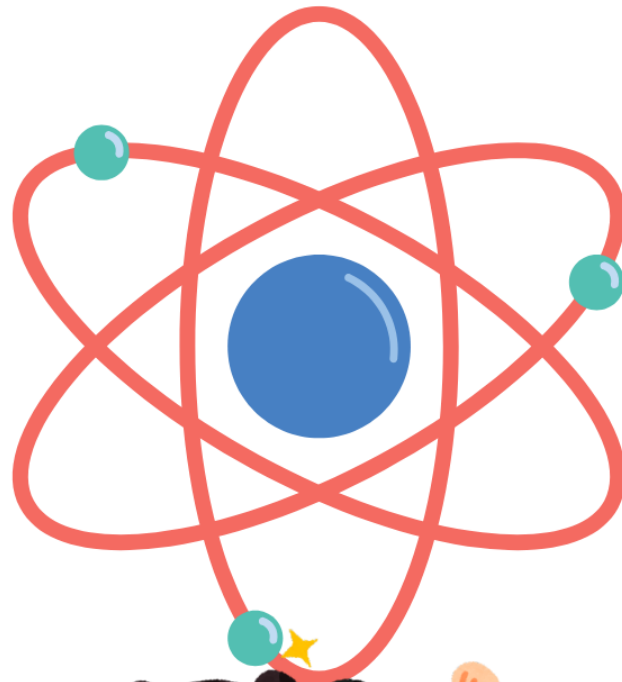




Einstein
PUBLIC SCHOOL

Nurturing a better tomorrow

Holiday Homework Class 5





Hindi

सामान्य निर्देश:

- परियोजना कार्य अनिवार्य है।
- कार्य विषयानुसार और रचनात्मक होना चाहिए।
- इसे फाइल/स्क्रेपबुक के रूप में तैयार करें।

हिंदी परियोजना कार्य (कक्षा 5)

विषय: मेरा प्रिय त्योहार

निर्देश:

- अपने पसंदीदा त्योहार का नाम लिखें।
- 8-10 वाक्यों में उसका वर्णन करें।
- उससे संबंधित चित्र बनाएं या चिपकाएं।

विषय: पर्यावरण संरक्षण

निर्देश:

- पर्यावरण क्या है? (2-3 वाक्य)
- इसे बचाने के 5 उपाय लिखें।
- पोस्टर बनाकर रंग भरें।

विषय: कहानी लेखन

निर्देश:

- समय का सही सदुपयोग पर कहानी लिखिए।
- कहानी का शीर्षक लिखिए।





कहानी की सीख लिखिए।

.अनुशासन हमारे लिए क्यों आवश्यक है 10लाइन लिखिए।

छत पर चिड़ियों के लिए दाना और पानी राखिए दाना चुगते हुए चिड़ियों का वीडियो बनाकर क्लास टीचर के पास भेजें

-
- अंत में सीख (moral) लिखें।

विषय: पत्र लेखन

निर्देश:

- अपने मित्र को छुट्टियों के बारे में पत्र लिखें।
- सही प्रारूप (format) का पालन करें।

विषय: मुहावरे और उनके अर्थ

निर्देश:

- 10 मुहावरे लिखें।
- उनके अर्थ और वाक्य बनाएं।

प्रस्तुति निर्देश:

- साफ-सुथरा और व्यवस्थित कार्य करें।
- नाम, कक्षा, सेक्शन स्पष्ट रूप से लिखें।
- रंग, चित्र और सजावट का प्रयोग करें।



English

1. Change each sentence as directed. Do not change the meaning.

A. Change from Affirmative to Negative

- i. He is an honest man.
- ii. She is always on time.
- iii. I have finished my homework.
- iv. They play cricket every evening.

B. Change from Negative to Affirmative*

- v. She is not a careless girl.
- vi. We did not forget to bring our books.

C. Change from Assertive to Interrogative

- vii. The moon shines at night.
- viii. Everybody wants to be happy.
- ix. We should obey our parents.

D. Change from Exclamatory to Assertive

- x. How lovely the rainbow is!
- xi. What a kind lady she is!

E. Change the Degree of Comparison

- xii. Mango is sweeter than any other fruit. → Change to Positive Degree
- xiii. No other student in the class is as intelligent as Riya. → Change to Superlative Degree

F. Change from 'Too...to' to 'So...that'

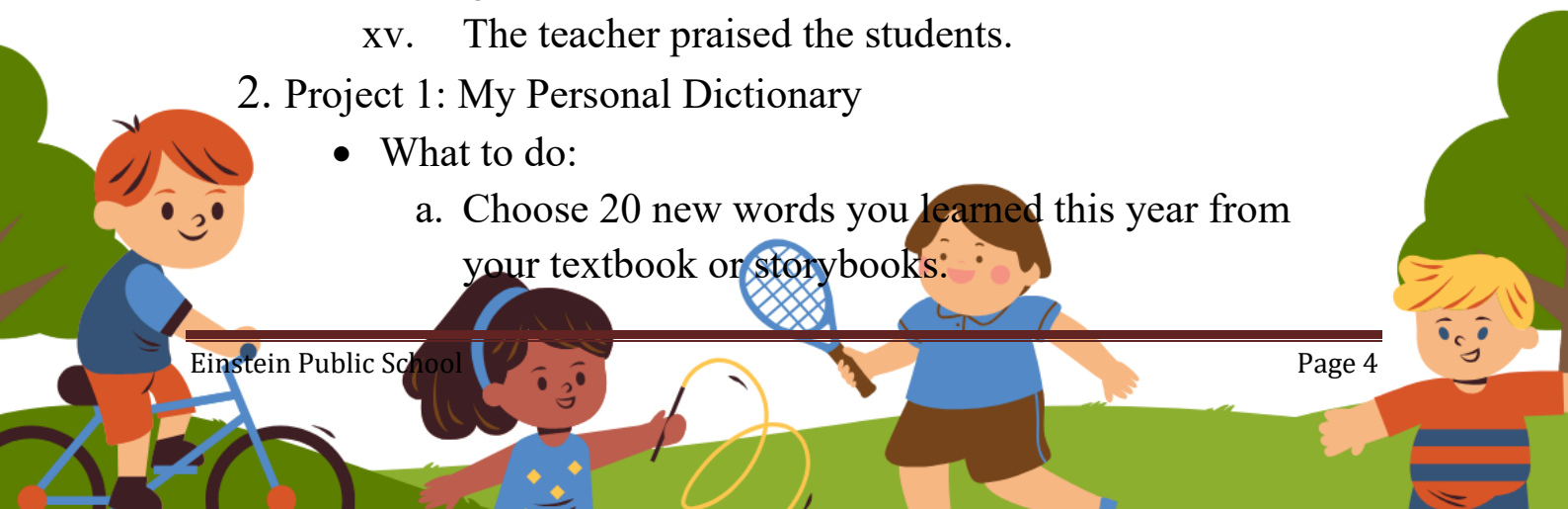
- xiv. The tea is too hot to drink.

G. Change the Voice*

- xv. The teacher praised the students.

2. Project 1: My Personal Dictionary

- What to do:
 - a. Choose 20 new words you learned this year from your textbook or storybooks.



- b. For each word write: Word → Meaning → Picture/Drawing → Your own sentence.
- c. Arrange alphabetically like a real dictionary.
- d. Design a cover page: “My Word Treasure by [Your Name]”

3. Project 2: Newspaper for Kids

- What to do:
 - a) Create a 2-page newspaper for children. Name it.
 - b) Include: 1 news story from home/school, 1 weather report, 1 joke/riddle, 1 small ad for a toy/book, 1 drawing.
 - c) Write dates, headlines, and your name as “Editor”.
 - d) Cut and paste or draw pictures.
- Write a paragraph on any one of these:
 - a) How I can help my mother at home.
 - b) My Dreamland planet.
 - c) My future school in 2050



Maths

1. Population

The population of City A is 4,85,670 and City B is 3,92,890.
Which city has more people and by how many?

2. Library

A library bought 1,250 books in January, 2,340 books in February, and 1,865 books in March. How many books did it buy in total?

3. Stadium Seats

A cricket stadium has 85,000 seats. 73,456 tickets were sold for a match. How many seats were empty?

4. Train Journey

A train carried 1,256 passengers in first class and 9,874 passengers in second class. How many passengers travelled in total?

5. Factory Production

A factory made 25,430 toys on Monday. On Tuesday it made 1,580 more toys than Monday. How many toys were made on Tuesday?

6. Mountain Height

Mount X is 8,848 m high. Mount Y is 1,965 m less than Mount X. What is the height of Mount Y?

7. Cost of Items

The cost of a TV is ₹32,450. The cost of a fridge is ₹19,870.
How much more does the TV cost than the fridge?

8. Book Pages

Jennie read a book with 1,250 pages. She has read 678 pages.
How many pages are left to read?

9. Birthday Candles





Grandfather is LXXV years old. Jennie is XV years old. How many years older is Grandfather than Jennie? Give answer in Hindu-Arabic numerals.

10. Chapters

A history book has XL chapters. Ravi has finished XXVIII chapters. How many chapters are left? Write answer in Roman numerals.

11. School Building

A school was built in MCMXC. The new library was added after XXX years. In which year was the library added? Write year in Hindu-Arabic numerals.

12. Roman Coins

Ravi has coins marked XII, XIX, XXIV, and XXX. Arrange the coins from smallest to largest value. Write values in Hindu-Arabic numerals.

13. Game Points

In a video game, Team A scored XLIX points. Team B scored XLI points. Which team won and by how many points?

14. Ticket Number

Jennie's movie ticket number is 49,999. The next ticket number will be what? Write the next number in Roman numerals.

15. Rounding

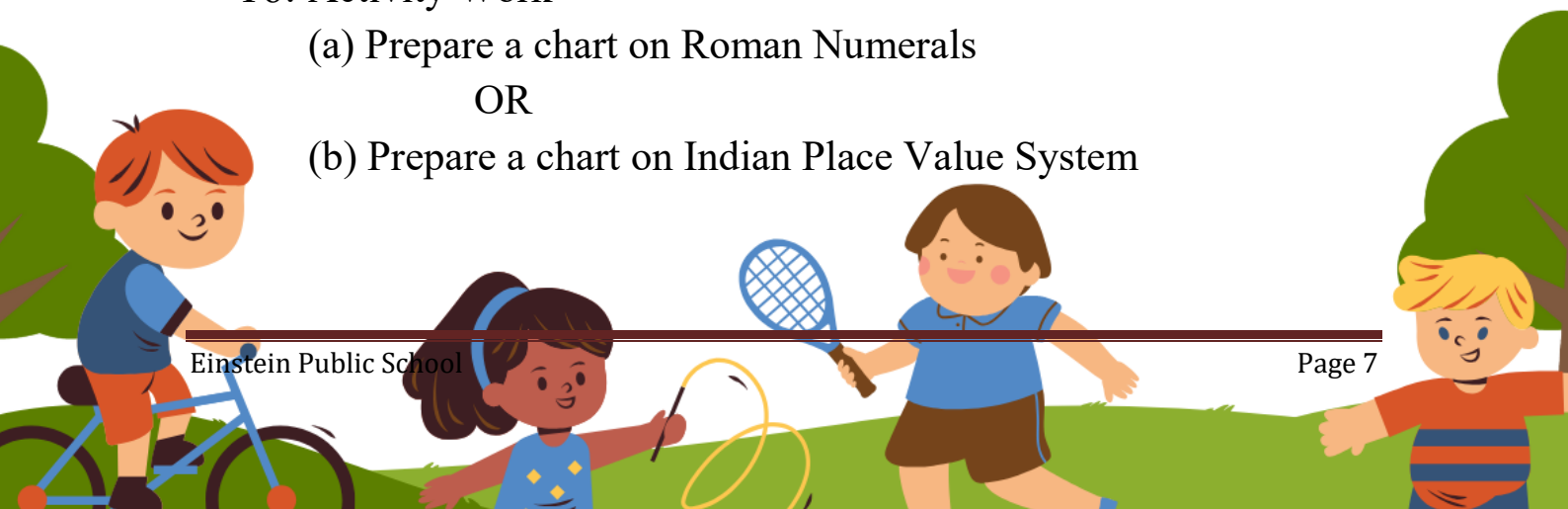
The number of trees in a forest is 78,432. Round this number to the nearest 100. Then write the rounded number in Roman numerals.

16. Activity Work

(a) Prepare a chart on Roman Numerals

OR

(b) Prepare a chart on Indian Place Value System

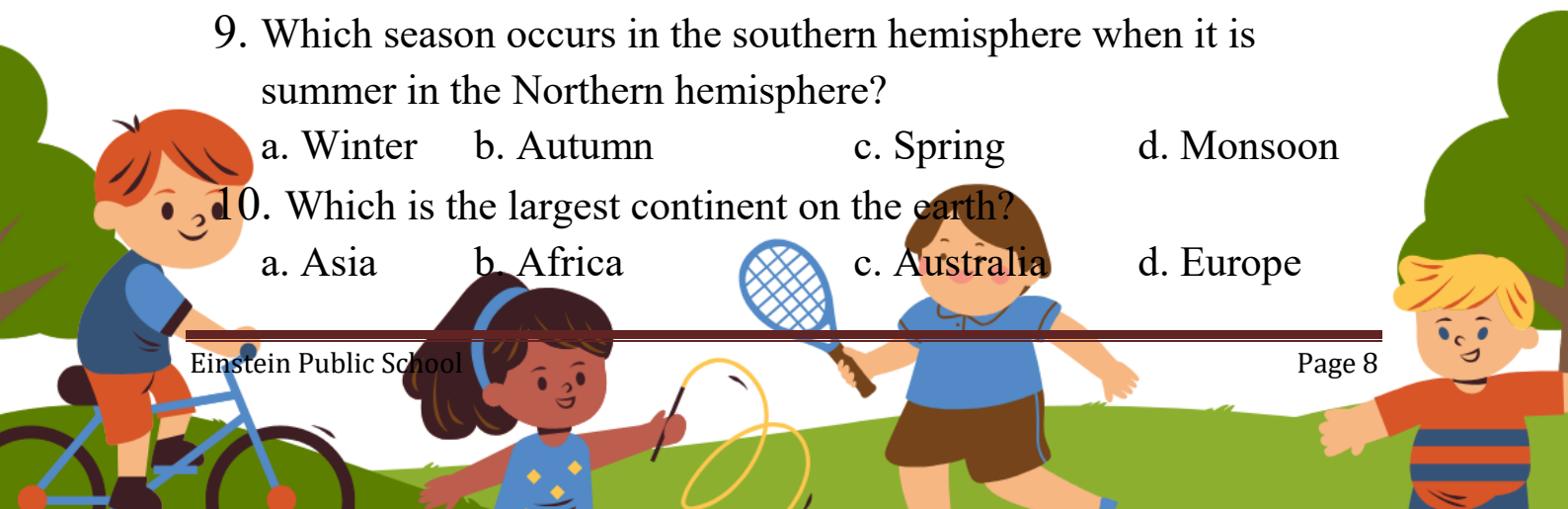




S.St

SECTION A: MULTIPLE CHOICE QUESTIONS

1. The Andes mountain range is located in-
a. Africa b. South America c. Europe d. Asia
2. Which of these is an old mountain range?
a. Himalayas b. Alps
c. Aravallis d. Rockies
3. Kashmir is an example of:
a. Desert b. Plateau c. U-Shaped d. Island
4. Which desert lies in Australia?
a. Atacama b. Great Victoria c. Sahara d. Mojave
5. Which Indian Island group is closer to Sri Lanka?
a. Lakshadweep b. Maldives
c. Andaman and Nicobar d. Iceland
6. The Earth rotates on its Axis from:
a. East to west b. West to East
c. North to south d. South to North
7. The reason we have leap year is because:
a. The earth spins faster some years
b. Extra 1/4 days add up over 4 years
c. February is the shortest month
d. The moon orbits the earth
8. In which position is the Northern hemisphere tilted most towards the sun?
a. March b. June c. September d. December
9. Which season occurs in the southern hemisphere when it is summer in the Northern hemisphere?
a. Winter b. Autumn c. Spring d. Monsoon
10. Which is the largest continent on the earth?
a. Asia b. Africa c. Australia d. Europe





11. The spherical model of the earth is called:
a. Map b. Globe c. Grid d. None
12. Which tool helps in finding direction?
a. Ruler b. Scale c. Compass d. Globe
13. The prime meridian passes through:
a. India b. Greenwich c. Brazil d. Australia
14. Sahara desert located in:
a. Europe b. Africa c. Asia d. America
15. Which landform is shaped like a table?
a. Mountain b. Plateau c. Island d. None
16. The Andaman and Nicobar Island belong to which country?
a. Sri Lanka b. Japan c. India d. Africa
17. Which landform is the highest?
a. Valley b. Plateau c. Mountain d. Plain
18. What causes day and night?
a. Rotation b. Revolution c. Axis tilt d. Equinox
19. The first Atlas was prepared in the year:
a. 1492 b. 1595 c. 1701 d. 1802

SECTION B

20. Unscramble the words.
- a. C I D A R L A N D C T I O N S I R E
 - b. S I R E C D T I O N
 - c. M E I T A T H C M A P
 - d. Y S P H C I A L M A P
 - e. S L Y B O M S
 - f. E T O A Q U R
 - g. M D I I N A S E R
 - h. P A A L L S E R
 - i. E R R E O L P X
 - j. D I I T T S O O R N



SECTION C: CASE STUDY

21. Rohan and Sia were looking at a large spherical object representing Earth. It was tilted and showed continents and oceans. Later, they saw a flat map in their book.
- What is the spherical model of the Earth called?
 - Why is the object tilted?
 - Should Rohan use a map or a globe to see his village in detail? Why?
 - Name the imaginary lines running from east to west.
 - What are the two important tools used to study the Earth?

SECTION D: Critical Thinking based questions

22. Imagine you are lost in the ocean with a GPS showing only latitude but not longitude.
Why would it be difficult to find your exact location?
23. Which is more important for determining time and why: Latitude or Longitude? Justify your answer with logic.

SECTION E: CREATIVE PROJECT WORK

24. A. 3D model of latitudes line (Roll No. 1–10)
B. 3D model of longitude line (Roll No. 11–20)
C. 3D model of major landforms (Roll No. 21–30)

Science

Circulatory System and Skeletal & Muscular System

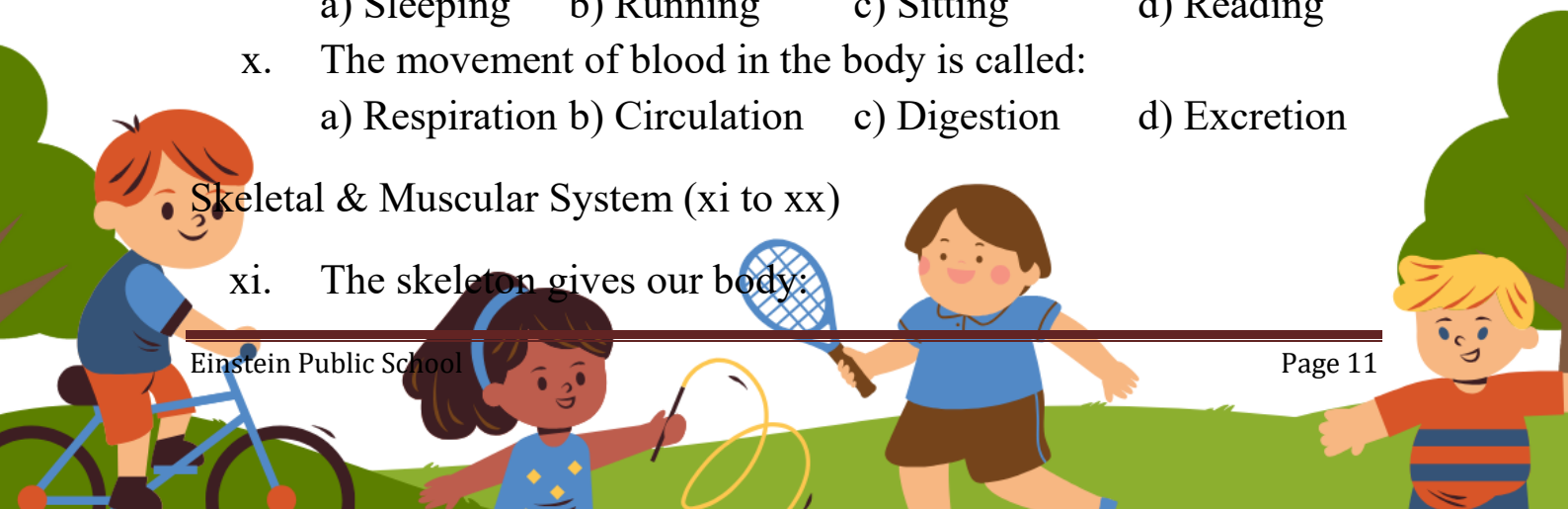
SECTION A: MCQs (20 Questions)

1. Circulatory System (i to j)

- i. The heart works like a:
a) Filter b) Pump c) Pipe d) Valve
- ii. Blood carries:
a) Oxygen b) Nutrients c) Waste d) All of these
- iii. Oxygen enters the blood through:
a) Heart b) Lungs c) Brain d) Bones
- iv. Red blood cells carry:
a) Carbon dioxide b) Oxygen
c) Water d) Food
- v. White blood cells help in:
a) Digestion b) Fighting diseases
c) Breathing d) Pumping blood
- vi. The heart is located in the:
a) Head b) Chest c) Stomach d) Leg
- vii. Blood vessels that carry blood away from the heart are:
a) Veins b) Arteries c) Capillaries d) Nerves
- viii. Plasma is the:
a) Solid part of blood b) Liquid part of blood
c) Gas in blood d) None
- ix. Heartbeat increases during:
a) Sleeping b) Running c) Sitting d) Reading
- x. The movement of blood in the body is called:
a) Respiration b) Circulation c) Digestion d) Excretion

Skeletal & Muscular System (xi to xx)

- xi. The skeleton gives our body:





True / False:

3. The heart beats faster during exercise. (_____)

4. Blood is not needed during running. (_____)

5. Case Study 2 – Skeletal & Muscular System

Aman fell while playing and hurt his arm. The doctor said his bone was injured and advised rest.

Fill in the blanks:

1. The _____ system gives shape and support to the body.

2. Muscles are attached to _____.

True / False:

3. Bones help in movement of the body. (_____)

4. Muscles do not help in movement. (_____)

Section – D

BONUS CREATIVE PROJECT – SCIENCE

6. Topic: Circulatory System

7. Make a 3D Model of the Human Heart

Instructions:

- Make a 3D model of the human heart using clay or coloured paper.
- Label the parts:
 - ✓ Atria
 - ✓ Ventricles
 - ✓ Arteries
 - ✓ Veins
- Decorate the model neatly.

