



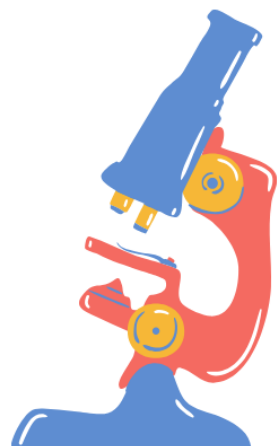
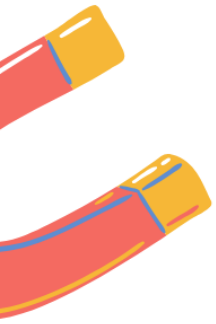
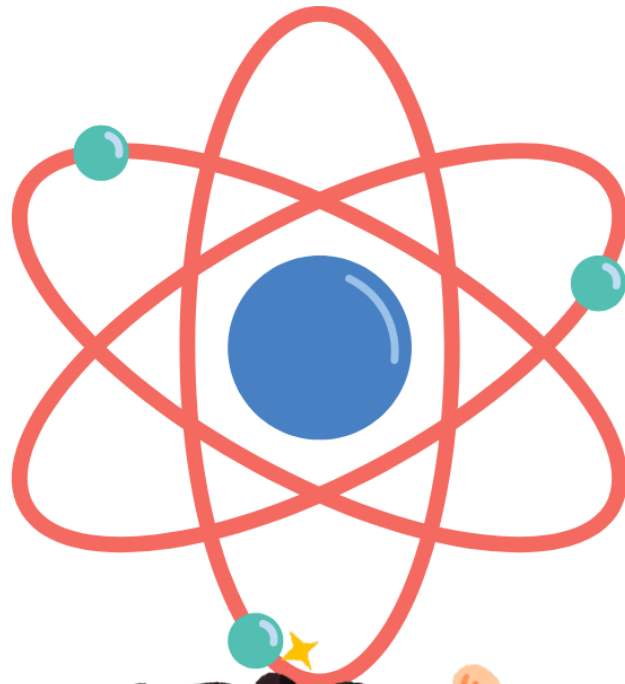
Einstein

PUBLIC SCHOOL

Nurturing a better tomorrow

Holiday Homework

Class 7



Hindi

1. अनुच्छेद लेखन (कोई एक) (80–100 शब्दों में लिखें)

- मेरा प्रिय त्योहार
- पर्यावरण संरक्षण का महत्व
- मेरा प्रिय शिक्षक

2. व्याकरण कार्य (15 प्रश्न)

i. निम्न प्रकार से वाक्य परिवर्तन करें—

(क) वर्तमान काल से भूतकाल

उदाहरण: राम स्कूल जाता है। → राम स्कूल गया।

- मोहन बाजार जाता है।
- सीता खाना बनाती है।
- बच्चा दूध पीता है।
- राधा गीत गाती है।
- विद्यार्थी पढ़ाई करते हैं।
- लड़का क्रिकेट खेलता है।
- पिता जी समाचार पढ़ते हैं।
- माँ मंदिर जाती हैं।
- बच्चे पार्क में खेलते हैं।
- रीना चित्र बनाती है।
- किसान खेत में काम करता है।
- शिक्षक पढ़ाते हैं।
- लड़की नृत्य करती है।
- मैं स्कूल जाता हूँ।



- o) वे कहानी सुनते हैं।
(ख) एकवचन से बहुवचन
उदाहरण: बच्चा खेलता है। → बच्चे खेलते हैं।
- a) लड़की गाना गाती है।
 - b) छात्र पढ़ता है।
 - c) गाय घास खाती है।
 - d) चिड़िया उड़ती है।
 - e) लड़का दौड़ता है।
 - f) किसान खेत जोतता है।
 - g) बच्ची नाचती है।
 - h) मित्र स्कूल जाता है।
 - i) विद्यार्थी प्रश्न पूछता है।
 - j) महिला बाजार जाती है।
 - k) पेड़ हरा है।
 - l) खिलाड़ी दौड़ता है।
 - m) शिक्षक समझाता है।
 - n) बिल्ली दूध पीती है।
 - o) बच्चा कहानी सुनता है।

3. भाषा ज्ञान

- i. संज्ञा की परिभाषा एवं पाँच उदाहरण लिखिए।
- ii. सर्वनाम की परिभाषा एवं पाँच उदाहरण लिखिए।
- iii. पाँच पर्यायवाची शब्द लिखिए।
- iv. पाँच विलोम शब्द लिखिए।
- v. प्रतिदिन 10 कठिन शब्द लिखकर याद कीजिए।

4. Critical Thinking



- a) हिंदी भाषा का हमारे जीवन में क्या महत्व है?
- b) पुस्तकों को हमारा सच्चा मित्र क्यों कहा जाता है?

5. Project Work (अनिवार्य)

- विषय: “हिंदी कविता एवं उनका भावार्थ”
- किसी भी पाँच हिंदी कविताओं/दोहों को उनके भावार्थ सहित सुंदर एवं रंगीन प्रस्तुति में लिखिए।
- रंगीन पेन एवं चित्रों का प्रयोग करें।

English

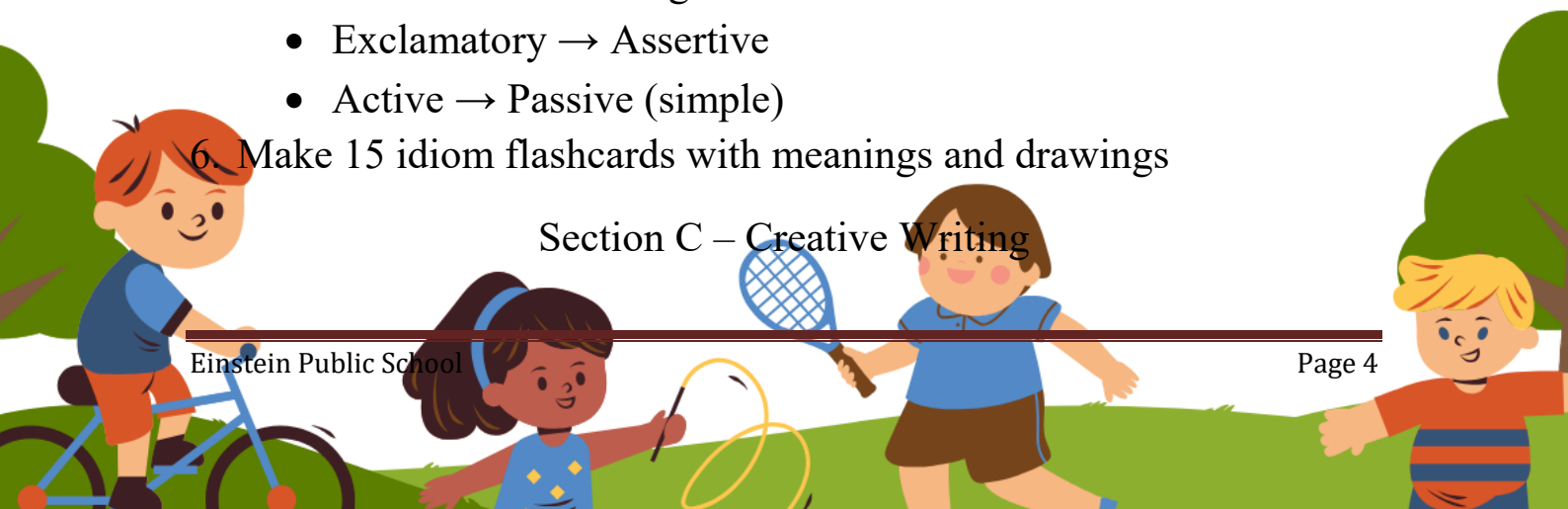
Section A – Literature Exploration

1. Read any two lessons and prepare:
 - Character sketch
 - Mind map
 - Alternative ending
2. Create a “Story Timeline” of one chapter using pictures/icons.
3. Record yourself reading a poem with proper expression and pronunciation.

Section B – Grammar Activities

4. Design a “Tenses Chart” with examples.
5. Prepare a “Sentence Transformation Ladder”
 - Assertive → Interrogative
 - Exclamatory → Assertive
 - Active → Passive (simple)
6. Make 15 idiom flashcards with meanings and drawings

Section C – Creative Writing



7. Write a mystery story beginning with: “When I opened the old box...”
8. Design a travel brochure for: “A Visit to an Imaginary Island”
9. Create a newspaper front page from the future.

Section D – Logical Thinking & Language Skills

10. Solve crossword puzzles based on grammar.
11. Create 10 rebus puzzles (picture words).
12. “Error Hunt”
Find incorrect English sentences from ads/notices/social media and correct them.

Section E – Project Work

13. Project: “Famous Authors Gallery”

Choose any 3 authors and include:

- Picture
- Famous works
- Interesting facts
- Quote

(Can be scrapbook/chart/digital presentation)

Section F – Fun Engagement Activities

14. Maintain a “Funny English Moments” diary.
15. Learn one English song.
16. Play word-chain games with family.
17. Listen to English news for 5 minutes daily.



Maths

1. Multiple choice questions:

- i. The value of $3 \times 4 + 2 \times (-5)$ is:
A) -22 B) -2 C) 22 D) 2
- ii. Which of the following rational numbers is between $\frac{1}{3}$ & $\frac{1}{2}$?
A) $\frac{3}{8}$ B) $\frac{1}{4}$
C) $\frac{1}{2}$ D) $\frac{2}{7}$
- iii. If the angles of a triangle are in the ratio 2:3:4, the largest angle is:
A) 60° B) 80° C) 100° D) 120°
- iv. The area of a circle with radius 7 cm is: $[\pi = \frac{22}{7}]$
A) 44 cm^2 B) 154 cm^2 C) 147 cm^2 D) 77 cm^2
- v. The simple interest on Rs 2000 at 5% p.a. for 2 years is:
A) Rs 100 B) Rs 200 C) Rs 150 D) Rs 250

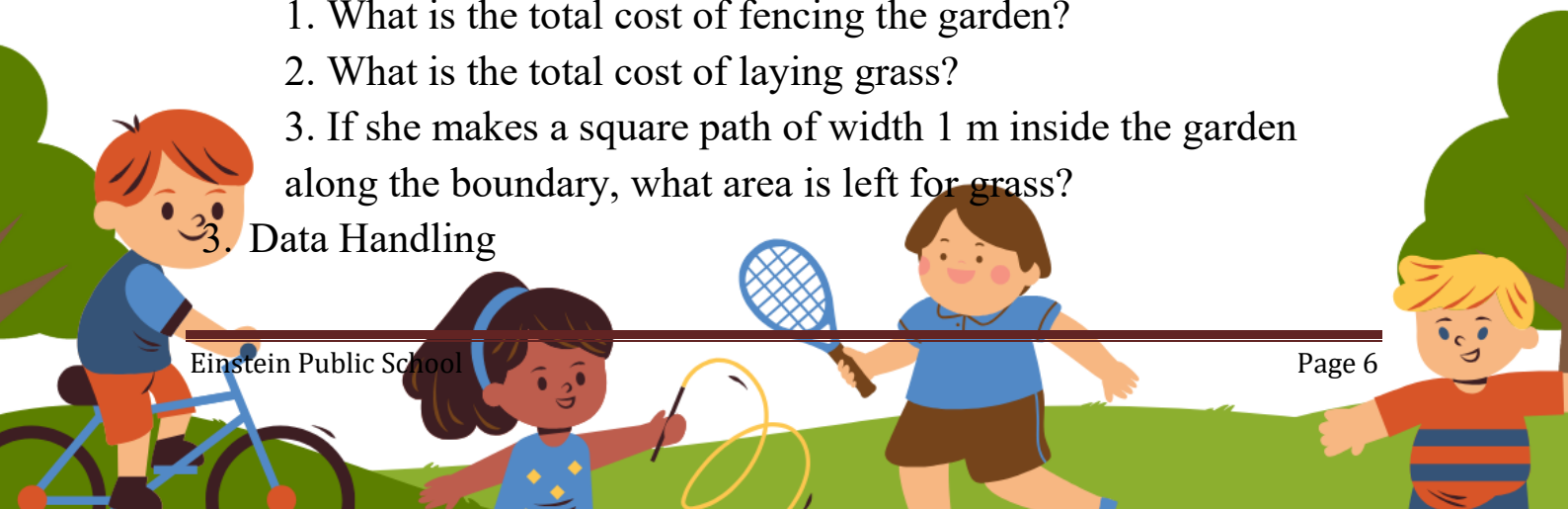
Case Based Questions

2. Case 1: Perimeter and Area

Riya has a rectangular garden of length 12 m and breadth 8 m. She wants to put a fence around it and also lay grass in the entire garden. The cost of fencing is Rs 15 per metre and the cost of laying grass is Rs 8 per m^2 .

1. What is the total cost of fencing the garden?
2. What is the total cost of laying grass?
3. If she makes a square path of width 1 m inside the garden along the boundary, what area is left for grass?

3. Data Handling



The marks scored by 10 students in a Maths test out of 25 are: 12, 15, 18, 12, 20, 23, 15, 19, 12, 22

1. Find the mean of the data.
2. What is the mode of the data?
3. Find the median of the data.
4. How many students scored above the mean?

4. Word Problems

1. A shopkeeper buys a book for Rs 120 and sells it for Rs 150. Find his profit percent.
2. The sum of two integers is -15. If one of them is 7, find the other integer.
3. In a class of 40 students, $\frac{3}{5}$ are girls. Find the number of boys in the class.
4. A car covers 180 km in 3 hours. How much distance will it cover in 5 hours if it travels at the same speed?
5. The diameter of a wheel is 70 cm. How many times will it rotate in covering a distance of 1.1 km? [$\pi = \frac{22}{7}$]

5. 8 Additional Sums to make 20 total

13. Simplify: $\frac{2}{3} + \frac{5}{6} - \frac{1}{2}$

14. Solve: $3x - 7 = 11$

15. Find the supplement of an angle that is one-third of its complement.

16. Express 0.375 as a fraction in lowest terms.

17. If $a = -2$, $b = 3$, find the value of $a^2 + 2ab + b^2$.

18. The perimeter of a square is 48 cm. Find its area.

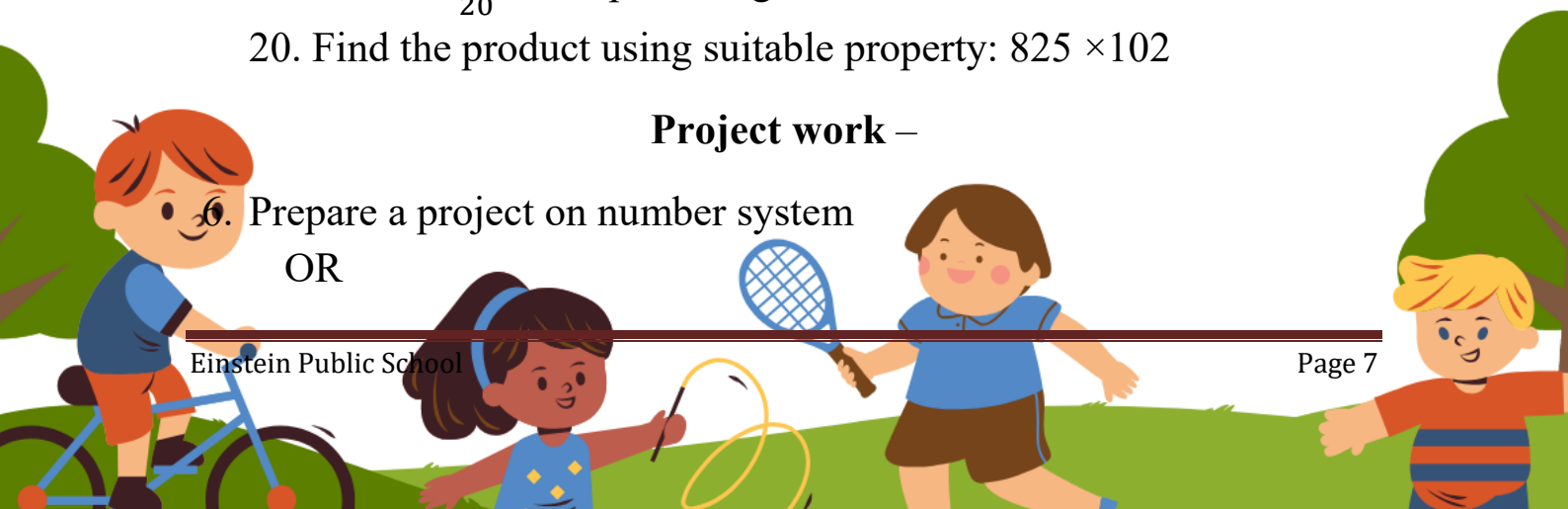
19. Convert $\frac{7}{20}$ into a percentage.

20. Find the product using suitable property: 825×102

Project work –

6. Prepare a project on number system

OR



7. Prepare a number system park.

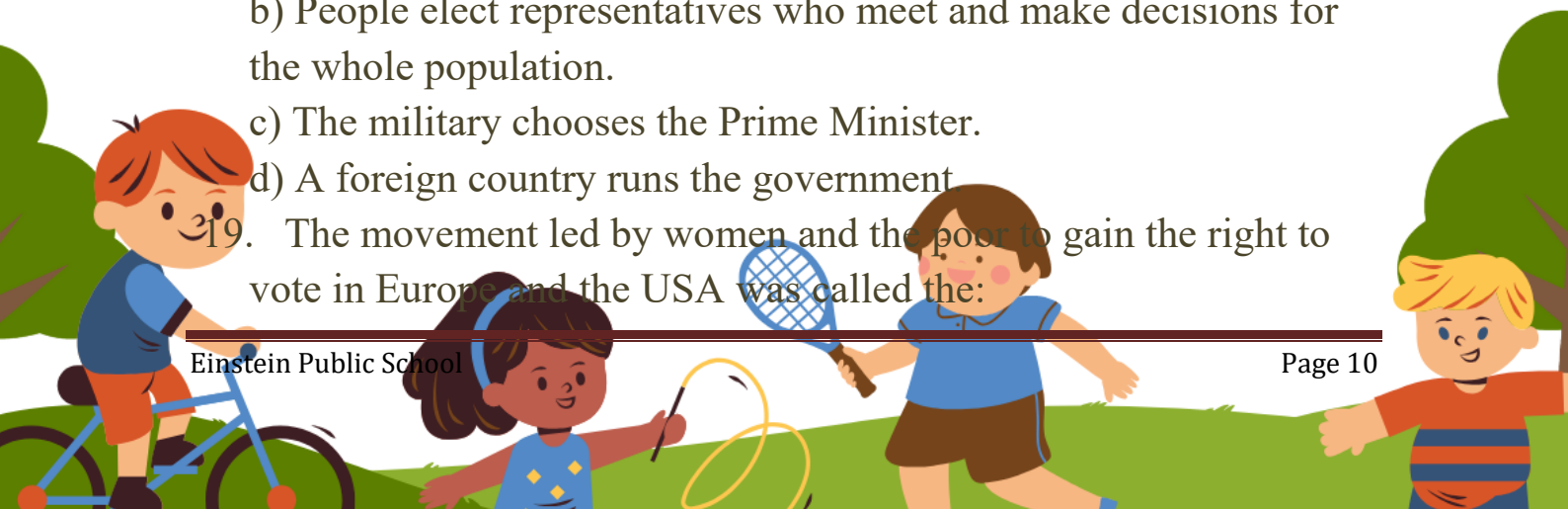
S.St

Section – A : MCQ

1. Which mountain range acts as a 'climatic divide' by preventing the cold winds of Central Asia from entering the Indian subcontinent?
 - a) The Aravallis
 - b) The Himalayas
 - c) The Western Ghats
 - d) The Satpura Range
2. The fertile 'Indo-Gangetic Plains' are formed by the interplay of which three major river systems?
 - a) Indus, Ganga, and Narmada
 - b) Ganga, Brahmaputra, and Godavari
 - c) Indus, Ganga, and Brahmaputra
 - d) Krishna, Kaveri, and Mahanadi
3. The 'Deccan Plateau' is tilted in which direction, causing most of its rivers to flow into the Bay of Bengal?
 - a) North to South
 - b) East to West
 - c) West to East
 - d) South to North
4. Which geographic feature is characterized by a 'rain shadow area' on its eastern side, leading to lower rainfall in the Deccan?
 - a) The Eastern Ghats
 - b) The Western Ghats
 - c) The Vindhya Range
 - d) The Nilgiri Hills
5. India is often called a 'Subcontinent' because:
 - a) It is completely surrounded by water.
 - b) It has a distinct geographical and cultural identity separated from the rest of Asia.
 - c) It is the largest country in the world.
 - d) It consists only of islands.



13. Which Mahajanapada was a 'Gana-Sangha' (republic) where decisions were made by an assembly of many rulers?
a) Magadha b) Kosala c) Vajji d) Avanti
14. Why did Magadha become the most powerful Mahajanapada?
a) It had access to iron ore mines for weapons.
b) Rivers like the Ganga and Son provided water and transport.
c) The presence of elephants in its forests for the army.
d) All of the above.
15. In a Monarchy, who has the final authority to make laws and take decisions?
a) The citizens through voting.
b) A group of elected representatives.
c) The King or Queen.
d) The Chief Justice.
16. What is the most essential feature of a Democracy?
(a) The people have the power to elect their own leaders.
(b) The leader's son automatically becomes the next leader.
(c) Only the wealthy can participate in government.
(d) There is no constitution.
17. 'Universal Adult Franchise' means that:
a) Only adults with property can vote.
b) Only men are allowed to vote.
c) All adult citizens, regardless of wealth or background, have the right to vote.
d) Only educated adults can vote.
18. A 'Representative Democracy' is a system where:
a) All citizens meet daily to vote on every single law.
b) People elect representatives who meet and make decisions for the whole population.
c) The military chooses the Prime Minister.
d) A foreign country runs the government
19. The movement led by women and the poor to gain the right to vote in Europe and the USA was called the:

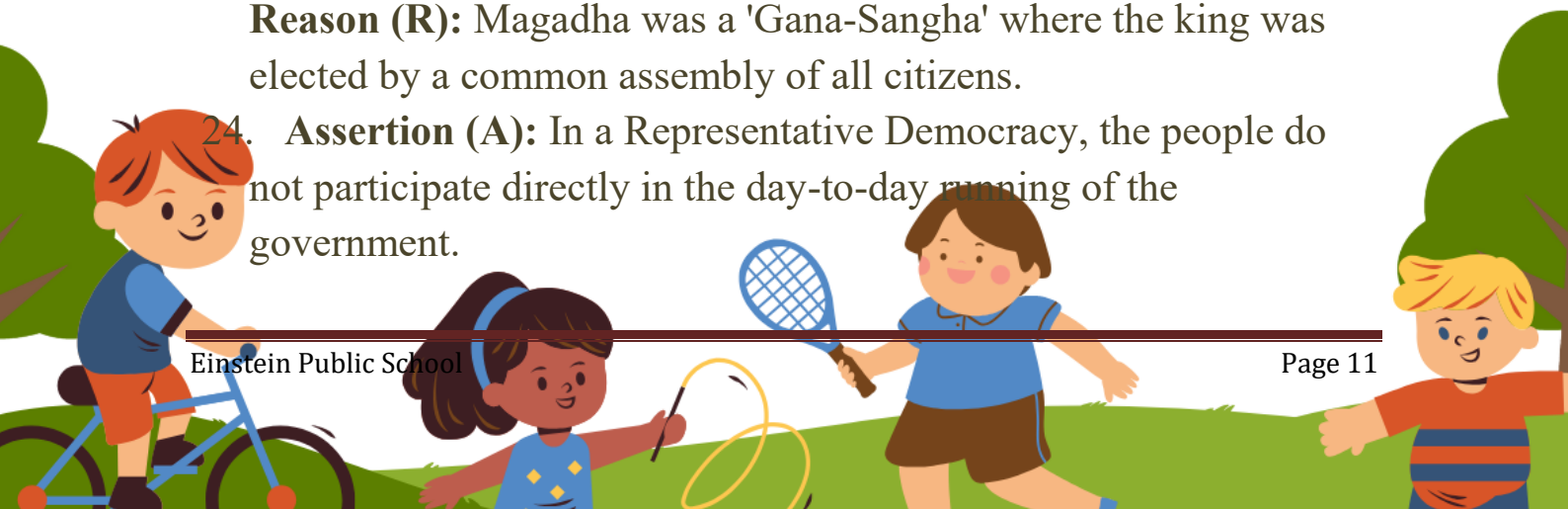


- a) Civil Rights Movement
c) Non-Cooperation Movement
- b) Suffrage Movement
d) Quit India Movement
20. Which form of government is typically characterized by a lack of political competition and the concentration of power in one person who did not inherit the position?
- a) Constitutional Monarchy
c) Direct Democracy
- b) Dictatorship
d) Oligarchy

Section – B : Assertion/Reason based questions

Instructions:

- Select (A) if both Assertion and Reason are true and Reason is the correct explanation of Assertion.
 - Select (B) if both Assertion and Reason are true but Reason is not the correct explanation of Assertion.
 - Select (C) if Assertion is true but Reason is false.
 - Select (D) if Assertion is false but Reason is true.
21. **Assertion (A):** The Northern Plains of India are among the most densely populated regions in the world.
Reason (R): The perennial rivers flowing from the Himalayas provide fertile alluvial soil and an abundant water supply for agriculture.
22. **Assertion (A):** Harappan cities like Mohenjo-daro and Harappa are praised for their advanced urban planning.
Reason (R): These cities featured a standard grid pattern of streets and a sophisticated covered drainage system.
23. **Assertion (A):** Magadha emerged as the most powerful Mahajanapada in ancient India.
Reason (R): Magadha was a 'Gana-Sangha' where the king was elected by a common assembly of all citizens.
24. **Assertion (A):** In a Representative Democracy, the people do not participate directly in the day-to-day running of the government.



Reason (R): Citizens choose their representatives through an election process, and these representatives meet to make laws for the entire population.

25. **Assertion (A):** In a Monarchy, the King or Queen has to explain their actions or defend their decisions to the citizens.

Reason (R): The monarch holds the power to make final decisions after discussing matters with a small group of advisors.

Section – C : Case based questions

26. India has many different physical features. In the northern part of the country lie the Himalayas, which are the highest mountain ranges in the world. These mountains protect India from very cold winds coming from Central Asia. Many rivers such as the Ganga, Yamuna, and Brahmaputra originate from the Himalayas. The region receives heavy snowfall and rainfall. People living here grow crops like apples and potatoes and also depend on tourism. The Himalayas are also important for forests, wildlife, and hydroelectric power generation.

Questions:

- (1) Why are the Himalayas important for India's climate?
- (2) Name any two rivers that originate from the Himalayas.
- (3) Mention one occupation of people living in the Himalayan region.

Section – D : Activity based questions

27. Cultural Map Activity

- Prepare an outline map of India and show:
- Mountain regions
- Desert areas
- Coastal plains
- Major rivers
- One famous food, dress, dance, or festival from each region



28. Create a clay or cardboard model of an ancient city such as a Mahajanapada capital.

- Include:
- Houses
- Fort walls
- Marketplaces
- Roads
- Water sources

29. River Valley Civilization Project

- Prepare a short project on why ancient civilizations developed near rivers.
- Include:
- Advantages of rivers
- Examples from India
- Pictures/maps



a) Aluminium foil

b) Graphite

c) Glass

d) Copper wire

20-A switch in OFF position makes the circuit:

a) Closed

b) Complete

c) Open

d) Conductive

Section B: Critical Thinking Questions

Q1. Riya touched an electric wire with wet hands and received a mild shock. Explain why wet hands are dangerous while handling electrical appliances. Also suggest two safety measures.

Q2. A student tested lemon juice, soap solution, and water using litmus paper. Lemon juice changed blue litmus to red, soap solution changed red litmus to blue, and water showed no change. What conclusion can you draw about these substances?

Section C: Case-Based Questions

Case Study 1: Kitchen Science

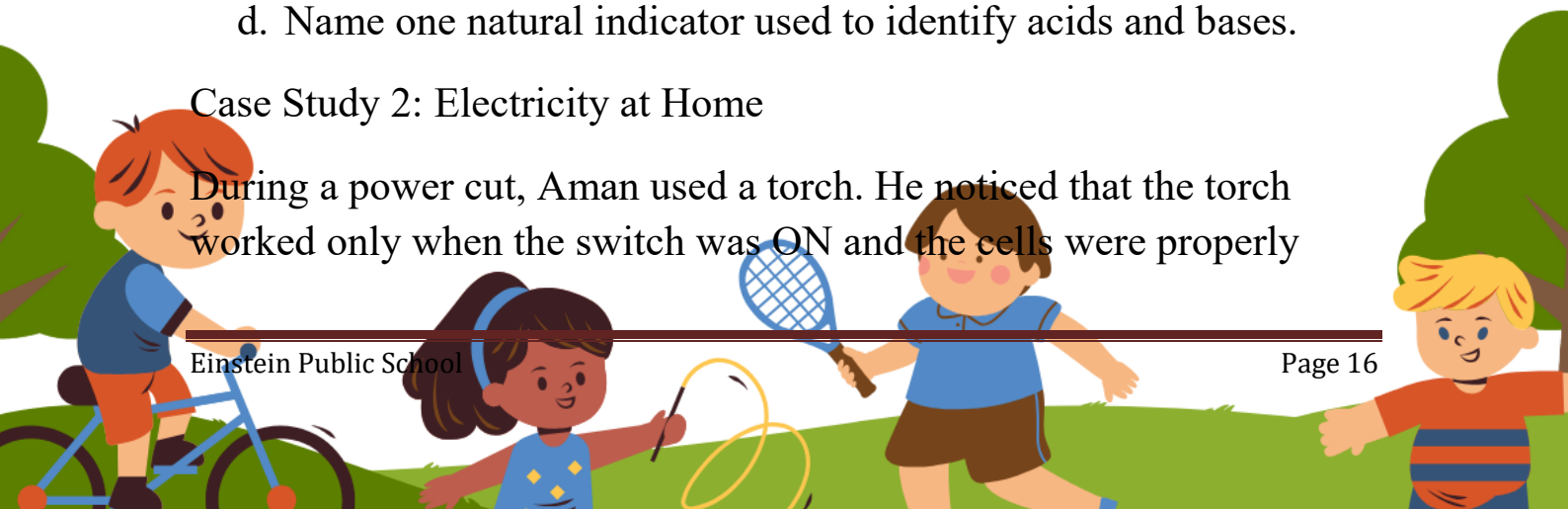
Mohan's mother was preparing food in the kitchen. She used lemon juice in salad, baking soda in cooking, and vinegar for cleaning. Mohan observed that these substances behaved differently with litmus paper.

Answer the following questions:

- Which substance among these is acidic in nature?
- Which substance is basic in nature?
- What happens when blue litmus paper is dipped in lemon juice?
- Name one natural indicator used to identify acids and bases.

Case Study 2: Electricity at Home

During a power cut, Aman used a torch. He noticed that the torch worked only when the switch was ON and the cells were properly



connected. Later, he found the torch stopped working because one wire inside had broken.

Answer the following questions:

- a. Why does the torch work only when the switch is ON?
- b. What type of circuit is formed when the wire breaks?
- c. Name two conductors used in electric circuits.
- d. Why are electric wires covered with plastic?

